

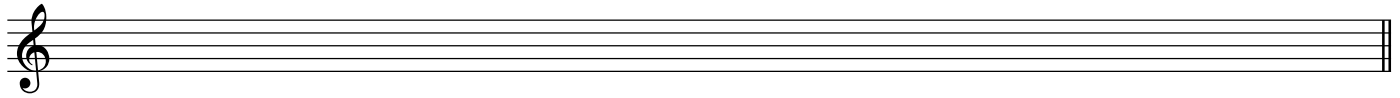
# Year of the Land

seven haiku in music  
(after ideas of Stevie Balch)

Dennis Báthory-Kitsz

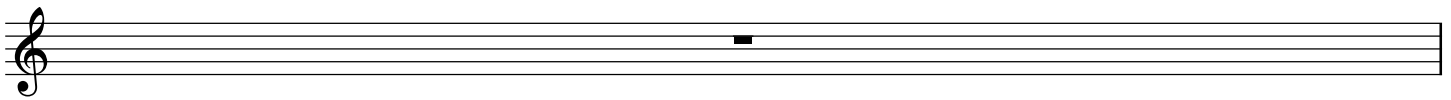
**A**

*♩=64*



**B** I. Snow/Water

8 *a little faster for just this section (until the whole notes)*



9 *quiet tongue slaps*



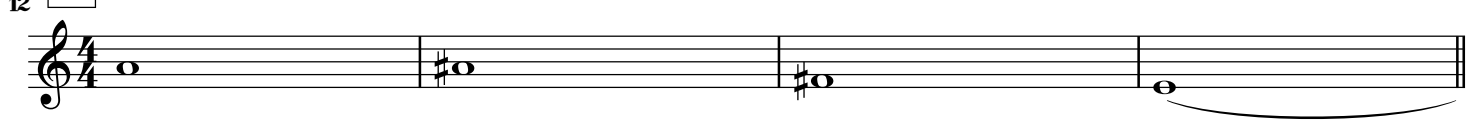
*ppp*



11 *normal tonguing*

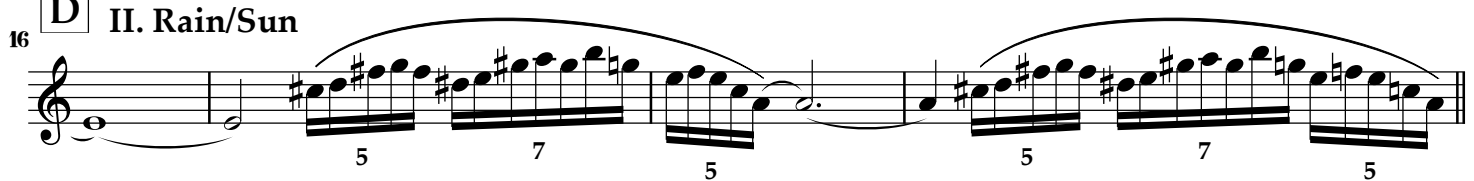


**C** *♩=64*



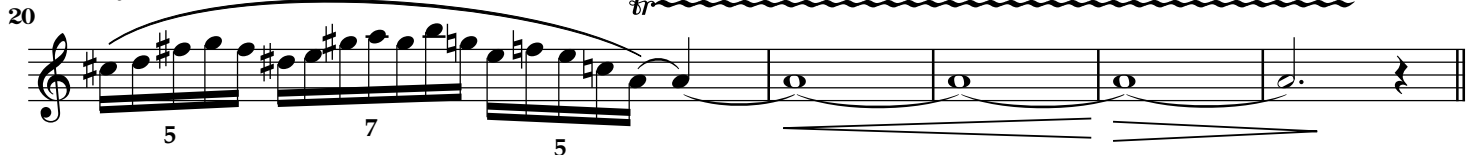
*ppp*

*sequential entries, unsync'ed okay*



**E** III. Peepers/Birds

*sync here*



**F** IV. Flowers

25

*mp* *mf*

Musical notation for measure 25, featuring a treble clef, a key signature of one sharp (F#), and a 4/4 time signature. The melody consists of eighth notes with a dynamic marking of *mp* and a *mf* marking towards the end of the measure.

**G**

30

*mp* *mf* *p*

Musical notation for measure 30, featuring a treble clef, a key signature of one sharp (F#), and a 4/4 time signature. The melody consists of quarter notes with a dynamic marking of *mp*, *mf*, and *p* across the measure.

37

*mp* *p*

Musical notation for measure 37, featuring a treble clef, a key signature of one sharp (F#), and a 4/4 time signature. The melody consists of quarter notes with a dynamic marking of *mp* and *p* across the measure.

**H** V. Swimming/Children

43

*mp*

Musical notation for measure 43, featuring a treble clef, a key signature of one sharp (F#), and a 4/4 time signature. The melody consists of eighth notes with a dynamic marking of *mp*.

46

*f*

Musical notation for measure 46, featuring a treble clef, a key signature of one sharp (F#), and a 4/4 time signature. The melody consists of eighth notes with a dynamic marking of *f*.

48

*tr*

Musical notation for measure 48, featuring a treble clef, a key signature of one sharp (F#), and a 4/4 time signature. The melody consists of eighth notes with a dynamic marking of *tr* (trill) at the end of the measure.

**I** VI. Frost

51

*ff*

Musical notation for measure 51, featuring a treble clef, a key signature of one sharp (F#), and a 4/4 time signature. The melody consists of quarter notes with a dynamic marking of *ff*.

**J** VII. Falling Leaves

59

*pp*

Musical notation for measure 59, featuring a treble clef, a key signature of one sharp (F#), and a 4/4 time signature. The melody consists of eighth notes with a dynamic marking of *pp*.

65

*pp*

Musical notation for measure 65, featuring a treble clef, a key signature of one sharp (F#), and a 4/4 time signature. The melody consists of quarter notes with a dynamic marking of *pp* and a fermata over the final note.