

# LowBirds

for flute, clarinet, bass clarinet & piano

**Dennis Báthory-Kitsz**

WESTLEAF EDITION « PUBLISHERS OF MUSIC « W994



# LowBirds

for flute, clarinet, bass clarinet & piano

Copyright © 1999 by Dennis Báthory-Kitsz (ASCAP).

All rights reserved. Westleaf Edition W994.

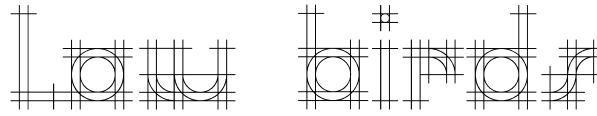


*LowBirds* was written for The Downtown Ensemble under the direction of Daniel Goode.

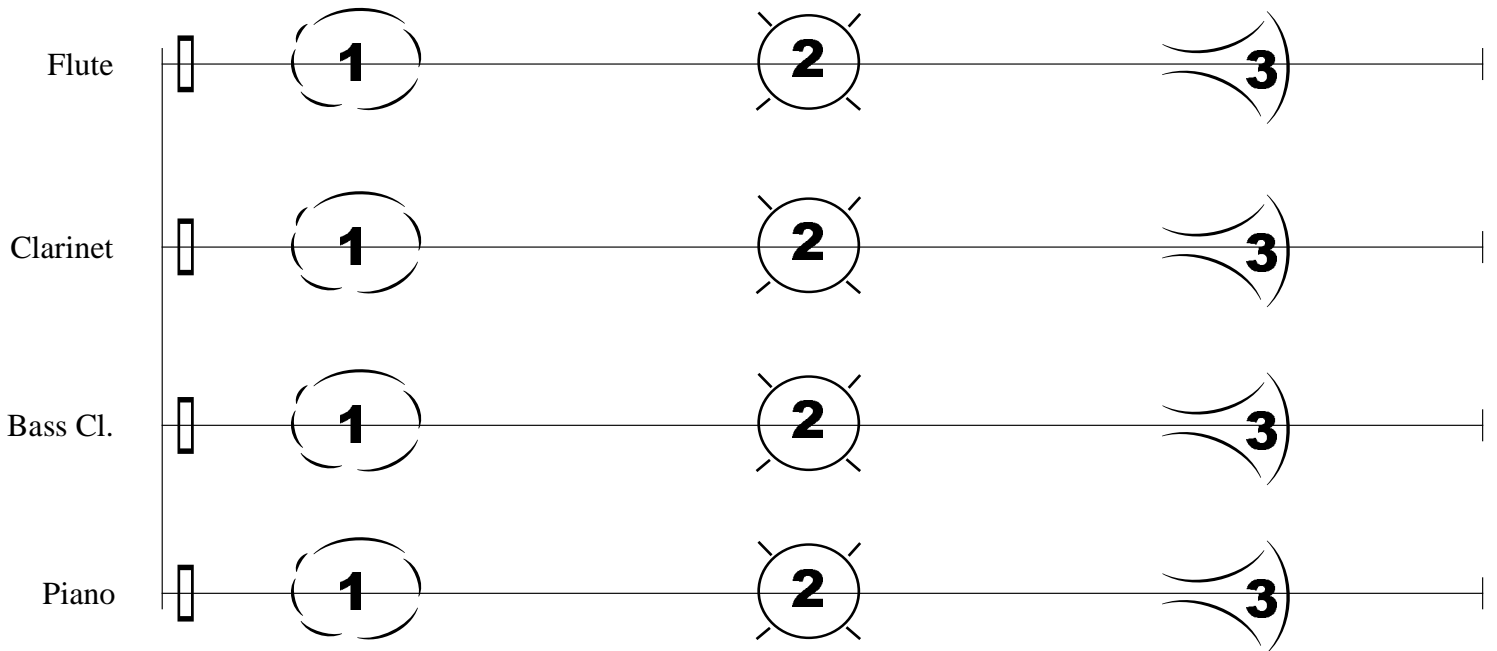
## Notes:

1. The full score contains time-positioned elements which indicate which modules are performed and when they are performed.
2. Dynamics are found on the full score. The parts include the module scores with all the notes and phrasings.
3. Headless notes are played by contour.
4. Downward strike is a lip/key glissando (greatest smoothness).
5. Upward curve is a lip glissando.

For the downtown ensemble ... especially daniel



dennis bathory hits

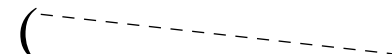


First symbol = Cloud Call (Cloud on piano)

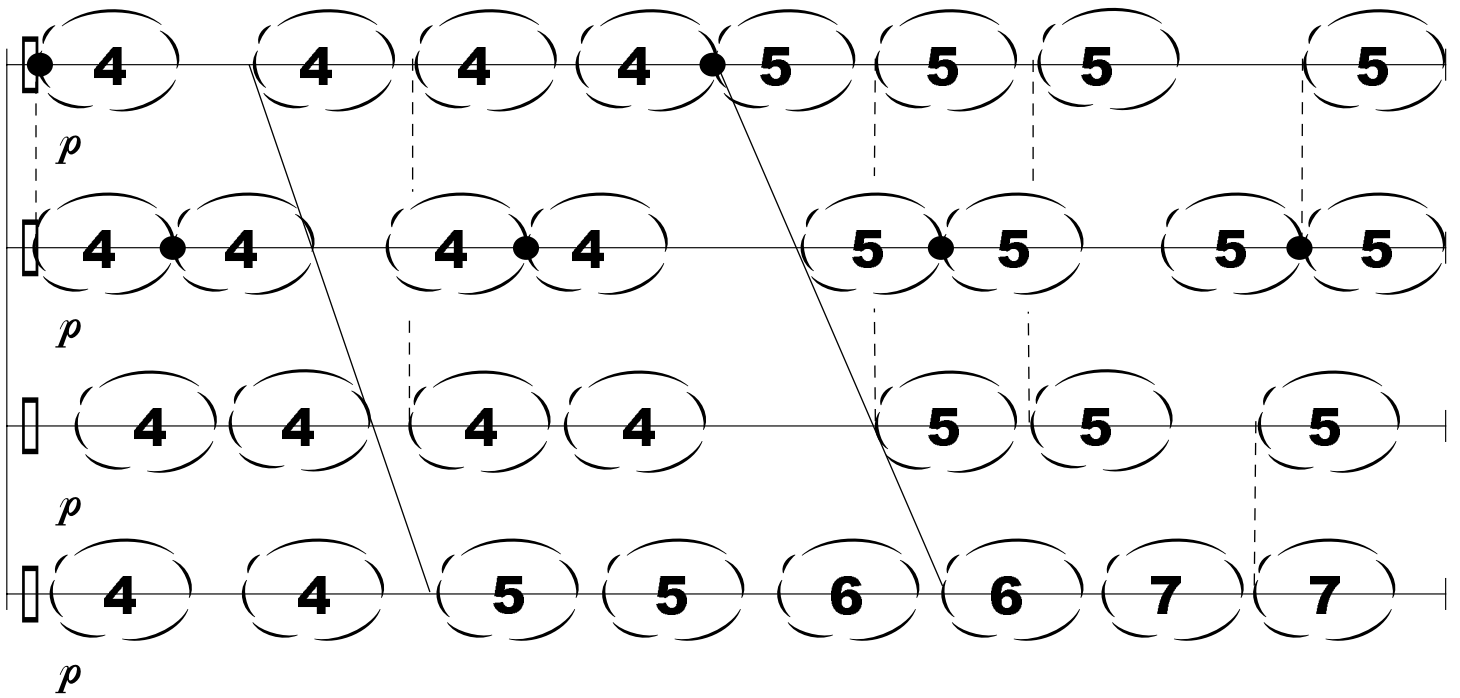
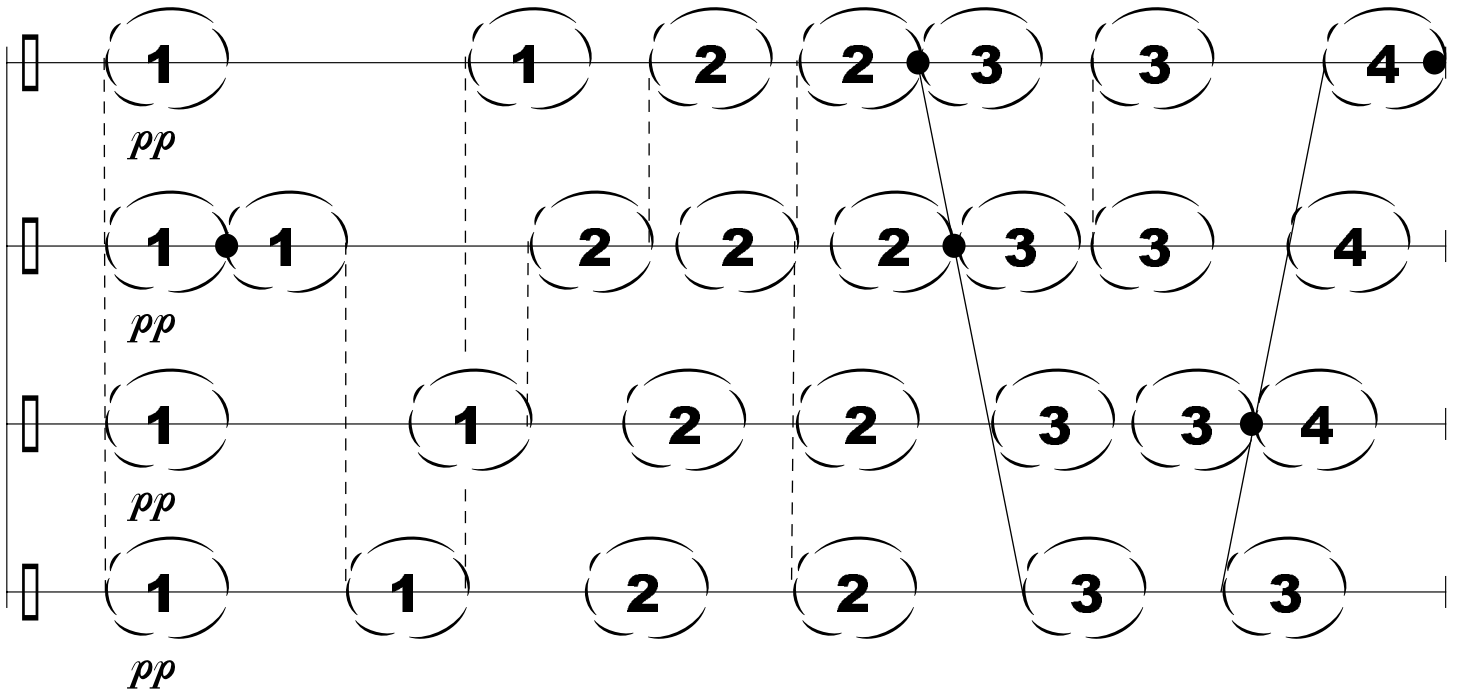
Second symbol = Day Call (Day on piano)

Third symbol = Cry Call (Cry on piano)

Solid line (  ) = sequenced

Dashed line (  ) = synced

*...in calm and personal greyness...*



*...seeking each other...*

Musical score for four staves. The first staff contains notes 5, 5, 6, 6, 6, 6. The second staff contains notes 5, 5, 6, 6, 6, 6. The third staff contains notes 5, 6, 6, 6, 1, 1. The fourth staff contains notes 8, 8, 9, 9, 9. Dynamics include *mp* and *p*. Solid lines connect the first 5 in the first staff to the first 5 in the second staff, and the first 6 in the first staff to the first 6 in the second staff. Dashed lines connect the second 5 in the first staff to the second 5 in the second staff, and the second 6 in the first staff to the second 6 in the second staff. A *p* dynamic is marked under the first 1 in the third staff.

*...a little faster...*

Musical score for four staves. The first staff contains notes 6, 6, 6, 1, 1. The second staff contains notes 6, 6, 1, 1, 1, 2. The third staff contains notes 1, 1, 2, 2, 2, 3. The fourth staff contains notes 9, 9, 9, 9, 9, 9, 9, 1, 1. Dynamics include *p* and *ppp*. Solid lines connect the first 6 in the first staff to the first 6 in the second staff, and the first 6 in the first staff to the first 1 in the third staff. A *p* dynamic is marked under the first 1 in the second staff. A *ppp* dynamic is marked under the first 9 in the fourth staff.

*...never deliberately together ... be responsive...*

*...attentive, faster...*

Musical notation for the first section, consisting of four staves. Each staff contains circled numbers with diagonal lines through them, indicating fingerings. The first staff has six notes: 2, 3, 2, 4, 2, 3. The second staff has seven notes: 2, 3, 3, 2, 4, 4, 2. The third staff has eight notes: 3, 4, 2, 3, 4, 3, 4, 3. The fourth staff has five notes: 1, 2, 3, 4, 5.

*...getting raucous...*

*...faster & incomplete...*

Musical notation for the second section, consisting of four staves. Each staff contains circled numbers with diagonal lines through them. The first staff has ten notes: 2, 4, 2, 5, 3, 5, 3, 6, 4, 5, 4, 6. The second staff has ten notes: 5, 5, 3, 4, 4, 3, 6, 6, 5, 6, 6. The third staff has ten notes: 4, 3, 5, 3, 4, 5, 4, 3, 6, 6. The fourth staff has eight notes: 2, 3, 4, 5, 3, 4, 5, 5. Each staff ends with a double line and a dynamic marking 'f'.

...random until agreed...

...relaxing and breathing...

The first section consists of four musical staves. Each staff begins with a series of overlapping circles, followed by a double bar line and a repeat sign. The notes are represented by circles containing numbers:

- Staff 1: 6, 6, 5, 4, 3, 2, 1
- Staff 2: 6, 5, 4, 3, 2, 1
- Staff 3: 5, 4, 3, 2, 1
- Staff 4: 4, 3, 2, 1

The second section consists of four musical staves. Each staff begins with a dynamic marking *mp* and contains notes represented by circles with numbers:

- Staff 1: 2, 1
- Staff 2: 1, 1
- Staff 3: 2, 1
- Staff 4: 1, 1, 1

A diagonal line connects the first '1' in the top staff to the first '1' in the bottom staff. A vertical dashed line is placed after the first '1' in the top staff. To the right of this dashed line, there are four breath marks, each consisting of a curved line with a '1' inside, indicating a breath point.

...very responsive and echoing...

A musical score for four staves. Each staff begins with a piano (*p*) dynamic marking. The notes are grouped by slurs and numbered with fingerings: 2, 3, and 4. The first staff has slurs for (2), (2), (3), (3), and (4). The second staff has slurs for (2), (2), (2), (3), (3), and (3). The third staff has slurs for (2), (2), (3), (3), (3), and (4). The fourth staff has slurs for (2), (3), (3), and (3). Diagonal lines connect the notes across staves, showing a sequence of intervals: a 2nd interval from the first staff to the second, a 2nd interval from the second to the third, a 3rd interval from the third to the fourth, a 3rd interval from the fourth back to the second, and a 4th interval from the second back to the first.

A musical score for four staves. The notes are grouped by slurs and numbered with fingerings: 4 and 5. The first staff has slurs for (4), (4), (4), (5), and (5). The second staff has slurs for (4), (4), (5), and (5). The third staff has slurs for (4), (5), and (5). The fourth staff has slurs for (4), (5), and (5). A vertical dashed line on the right side of the score is labeled with *pp* (pianissimo) four times, indicating the dynamic for the final notes on each staff.



*...stretching out the phrases...*

Four staves of music. Each staff begins with a square box on the left. The first two staves have a vertical dashed line. Each staff contains two notes, each with a slur and the number '5' below it. The notes are positioned at the beginning and end of the dashed line. The first staff has the label *ppp* below it, the second *ppp*, the third *ppp*, and the fourth *ppp*.

*...relative silences...*

*...as long as tolerable...*

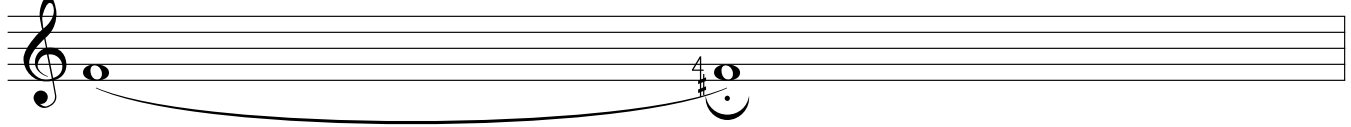
Four staves of music. Each staff begins with a square box on the left. The first two staves have a vertical dashed line. Each staff contains one note with a slur and the number '5' below it. The notes are positioned at the end of the dashed line. The first staff has the label *pppp* below it, the second *pppp*, the third *pppp*, and the fourth *pppp*.

# Lou Bird

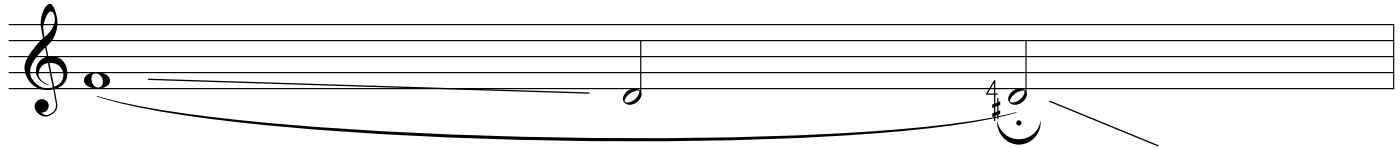
Dannie Butler's Bird

Flute

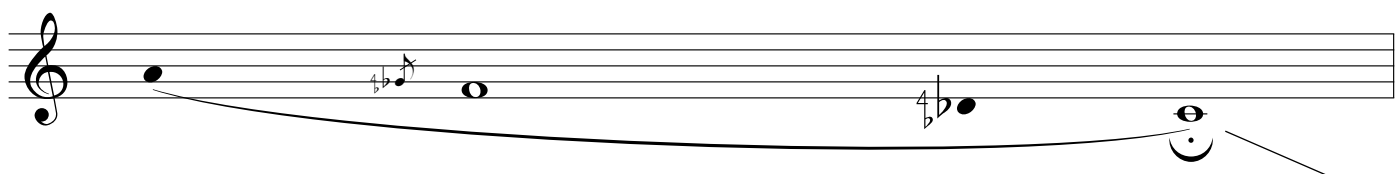
*Cloud call 1*



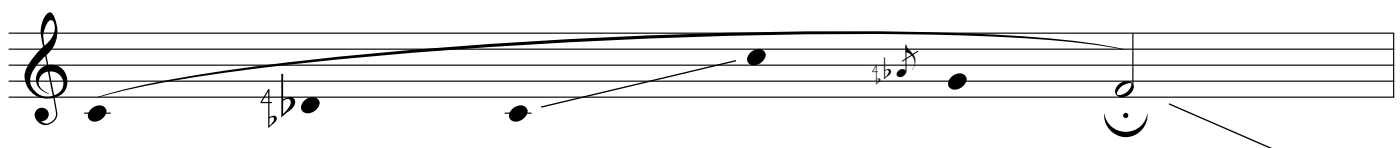
*Cloud call 2*




*Cloud call 3*



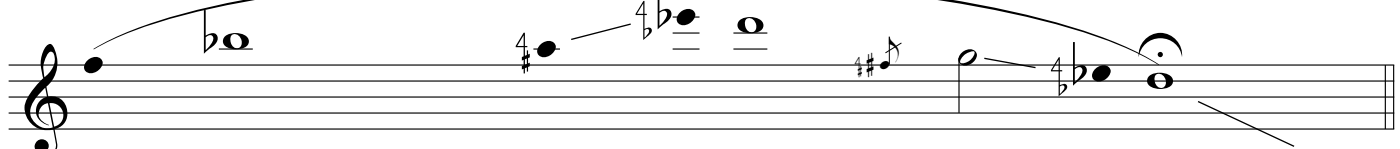
*Cloud call 4*



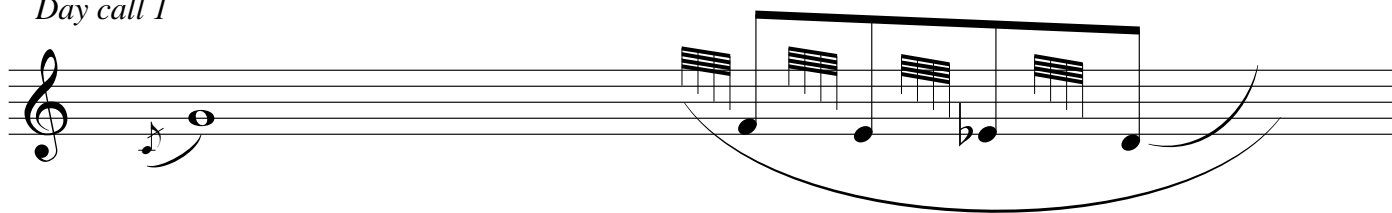
*Cloud call 5*



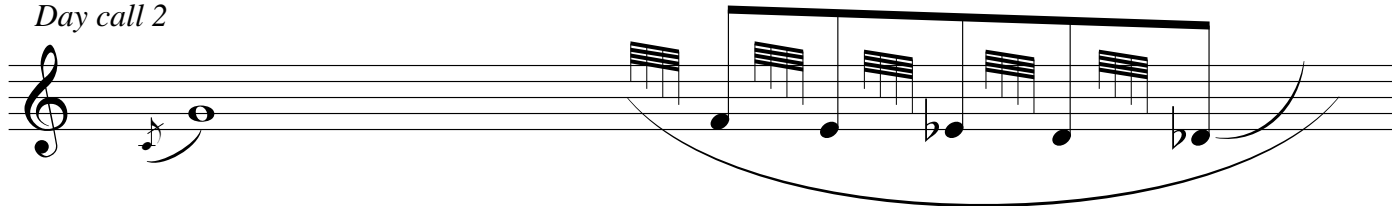
*Cloud call 6*



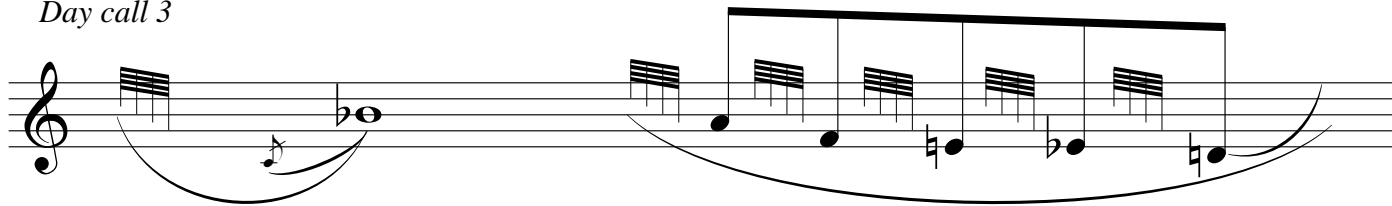
*Day call 1*



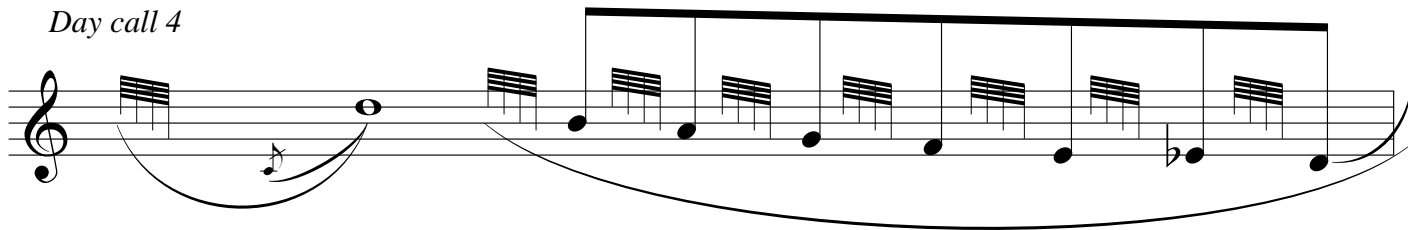
*Day call 2*



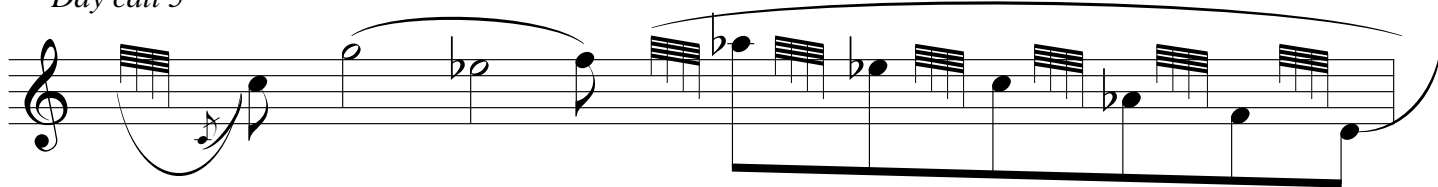
*Day call 3*



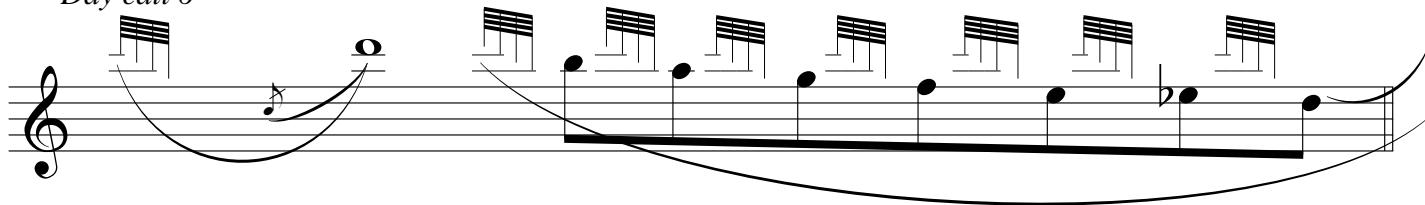
*Day call 4*



*Day call 5*



*Day call 6*



*Cry Call 1*

Musical notation for Cry Call 1, consisting of a single staff in treble clef. The melody begins with a quarter rest, followed by a quarter note G4, a quarter note F4, and a quarter note E4. A slur covers these three notes. This is followed by a quarter rest, a quarter note D4, and a quarter note C4. A slur covers these two notes. The piece ends with a quarter rest, a quarter note B3, and a quarter note A3, also slurred.

*Cry Call 2*

Musical notation for Cry Call 2, consisting of a single staff in treble clef. The melody begins with a quarter rest, followed by a quarter note G4, a quarter note F4, and a quarter note E4. A slur covers these three notes. This is followed by a quarter rest, a quarter note D4, and a quarter note C4. A slur covers these two notes. The piece continues with a quarter rest, a quarter note B3, a quarter note A3, and a quarter note G3. A slur covers these three notes. The piece ends with a quarter rest, a quarter note F3, and a quarter note E3, also slurred.

*Cry Call 3*

Musical notation for Cry Call 3, consisting of a single staff in treble clef. The melody begins with a quarter rest, followed by a quarter note G4, a quarter note F4, and a quarter note E4. A slur covers these three notes. This is followed by a quarter rest, a quarter note D4, and a quarter note C4. A slur covers these two notes. The piece continues with a quarter rest, a quarter note B3, a quarter note A3, and a quarter note G3. A slur covers these three notes. The piece ends with a quarter rest, a quarter note F3, and a quarter note E3, also slurred.

*Cry Call 4*

Musical notation for Cry Call 4, consisting of a single staff in treble clef. The melody begins with a quarter rest, followed by a quarter note G4, a quarter note F4, and a quarter note E4. A slur covers these three notes. This is followed by a quarter rest, a quarter note D4, and a quarter note C4. A slur covers these two notes. The piece continues with a quarter rest, a quarter note B3, a quarter note A3, and a quarter note G3. A slur covers these three notes. The piece ends with a quarter rest, a quarter note F3, and a quarter note E3, also slurred.

*Cry Call 5*

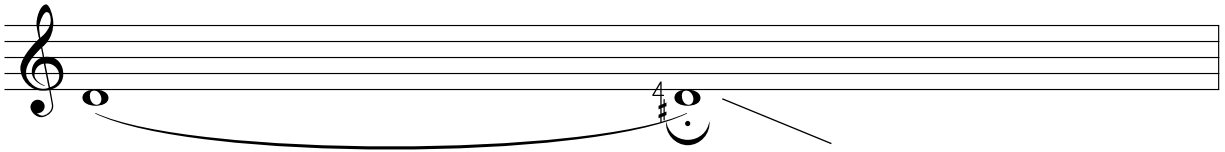
Musical notation for Cry Call 5, consisting of a single staff in treble clef. The melody begins with a quarter rest, followed by a quarter note G4, a quarter note F4, and a quarter note E4. A slur covers these three notes. This is followed by a quarter rest, a quarter note D4, and a quarter note C4. A slur covers these two notes. The piece continues with a quarter rest, a quarter note B3, a quarter note A3, and a quarter note G3. A slur covers these three notes. The piece ends with a quarter rest, a quarter note F3, and a quarter note E3, also slurred.

# Lou Limer


dannie batLory lites

*Cloud call 1*

Clarinet



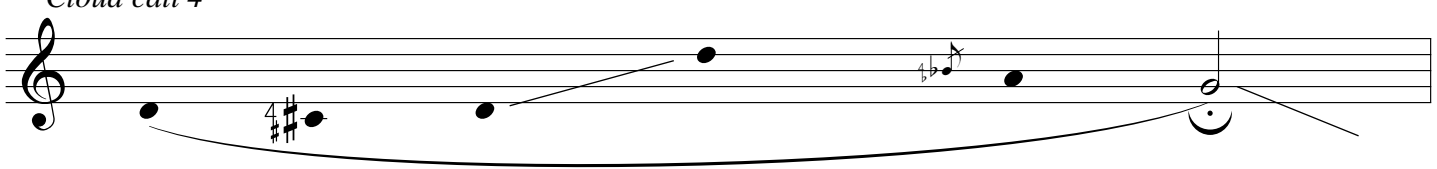
*Cloud call 2*



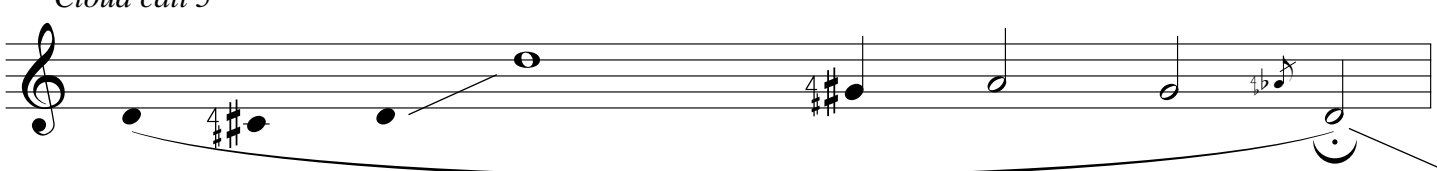
*Cloud call 3*



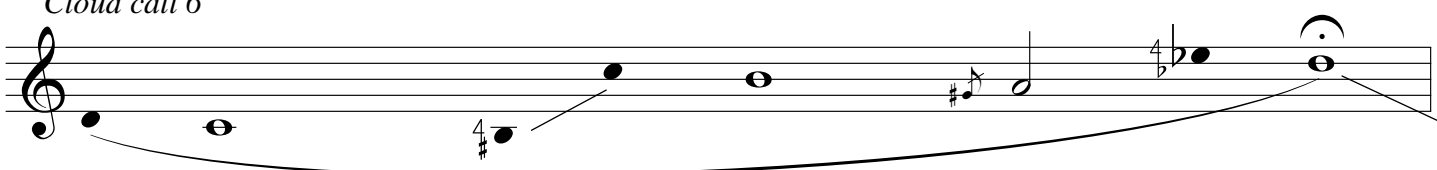
*Cloud call 4*



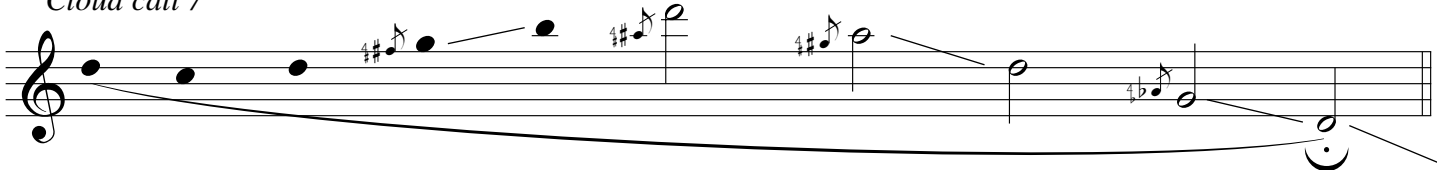
*Cloud call 5*



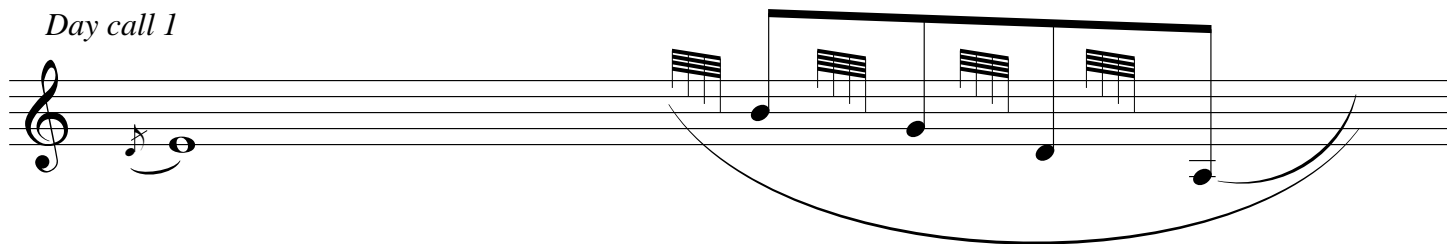
*Cloud call 6*



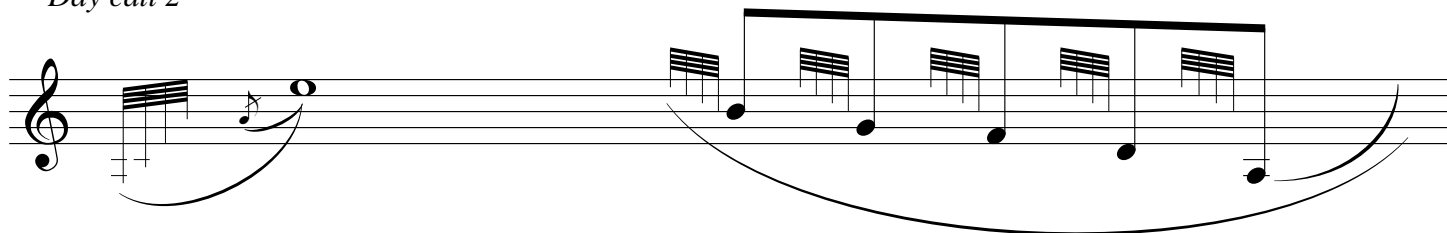
*Cloud call 7*



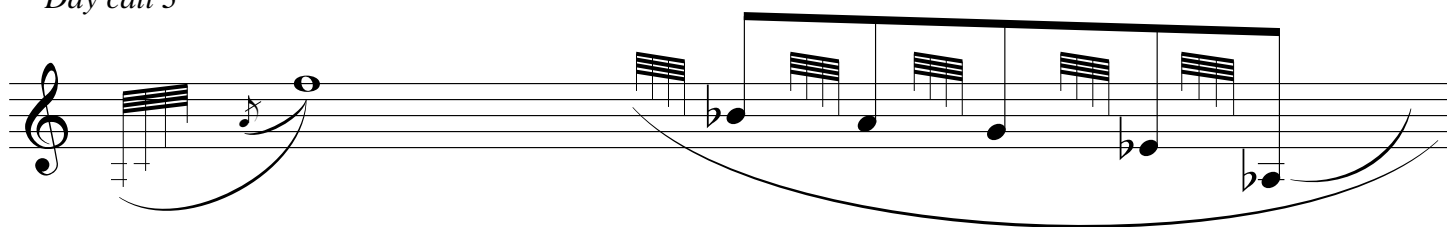
Day call 1



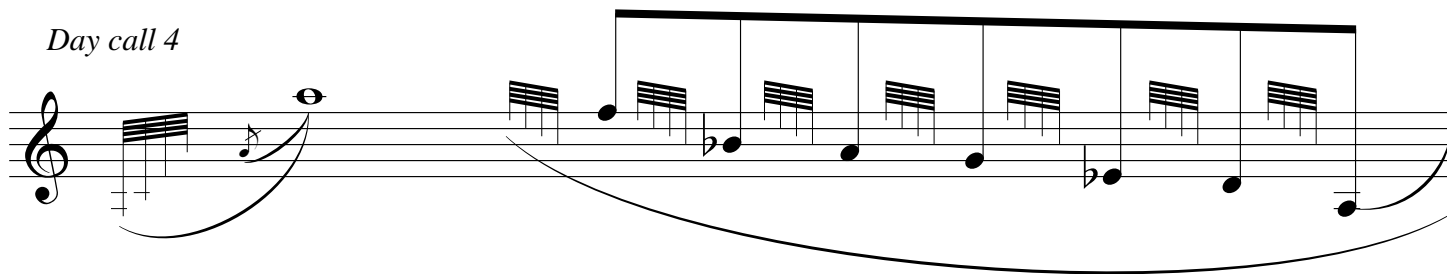
Day call 2



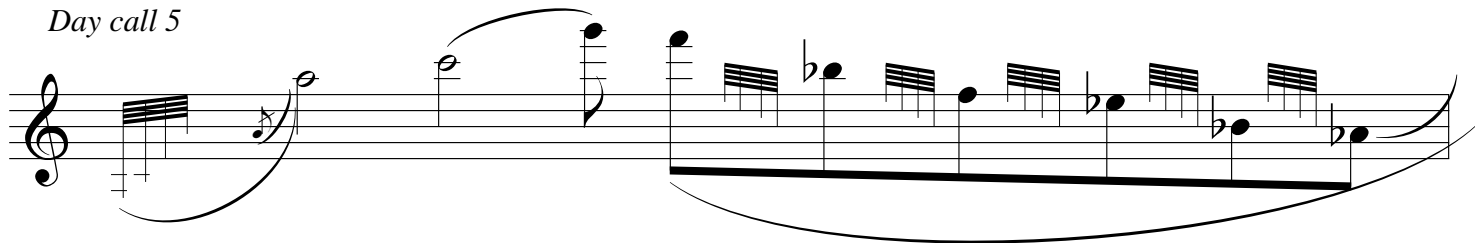
Day call 3



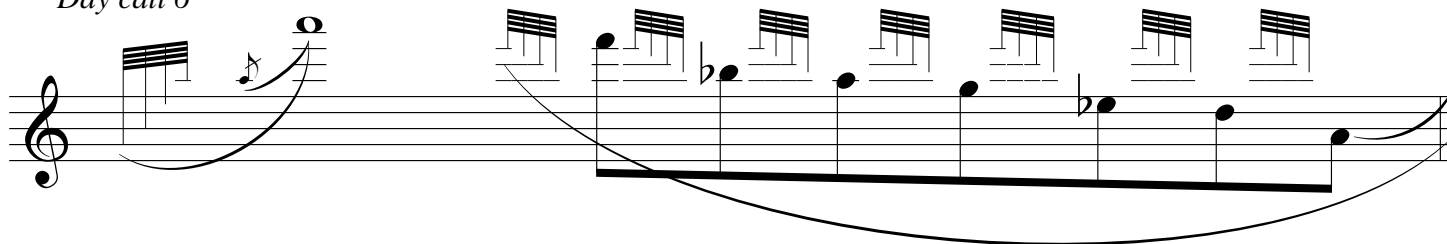
Day call 4



Day call 5



Day call 6



*Cry Call 1*

Musical notation for Cry Call 1, consisting of two measures on a single staff. The first measure begins with a treble clef and a sharp sign on the first line. It contains a quarter rest, followed by a quarter note on G4, and a quarter note on B4. The second measure contains a quarter note on G4, a quarter note on B4, and a quarter note on D5. A slur spans the first two notes of the first measure, and another slur spans the first two notes of the second measure.

*Cry Call 2*

Musical notation for Cry Call 2, consisting of two measures on a single staff. The first measure begins with a treble clef and a sharp sign on the first line. It contains a quarter rest, followed by a quarter note on G4, and a quarter note on B4. The second measure contains a quarter note on G4, a quarter note on B4, a quarter note on D5, and a quarter note on C5. A slur spans the first two notes of the first measure, and another slur spans the first four notes of the second measure.

*Cry Call 3*

Musical notation for Cry Call 3, consisting of two measures on a single staff. The first measure begins with a treble clef and a sharp sign on the first line. It contains a quarter rest, followed by a quarter note on G4, and a quarter note on B4. The second measure contains a quarter note on G4, a quarter note on B4, a quarter note on D5, and a quarter note on C5. A slur spans the first two notes of the first measure, and another slur spans the first four notes of the second measure.

*Cry Call 4*

Musical notation for Cry Call 4, consisting of two measures on a single staff. The first measure begins with a treble clef and a sharp sign on the first line. It contains a quarter rest, followed by a quarter note on G4, and a quarter note on B4. The second measure contains a quarter note on G4, a quarter note on B4, a quarter note on D5, and a quarter note on C5. A slur spans the first two notes of the first measure, and another slur spans the first four notes of the second measure.


*Cry Call 5*

Musical notation for Cry Call 5, consisting of two measures on a single staff. The first measure begins with a treble clef and a sharp sign on the first line. It contains a quarter rest, followed by a quarter note on G4, and a quarter note on B4. The second measure contains a quarter note on G4, a quarter note on B4, a quarter note on D5, and a quarter note on C5. A slur spans the first two notes of the first measure, and another slur spans the first four notes of the second measure.

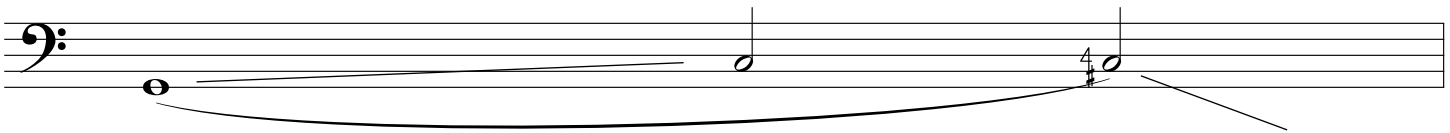
Lou Bird  
Dannie Hathorn

Cloud call 1

Bass Clarinet



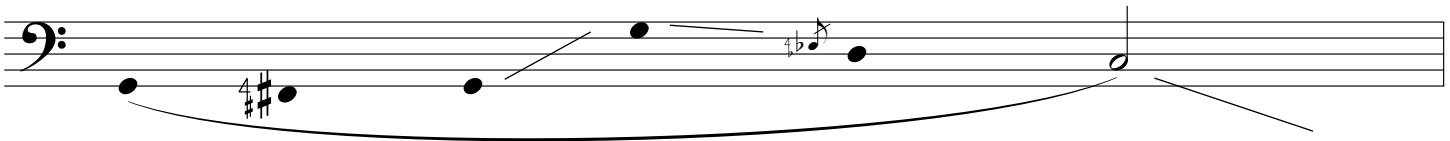
Cloud call 2



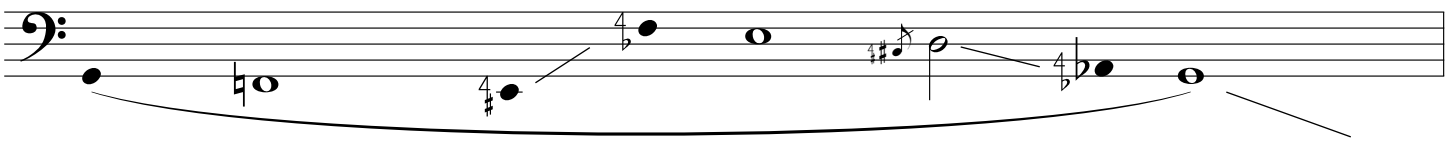
Cloud call 3



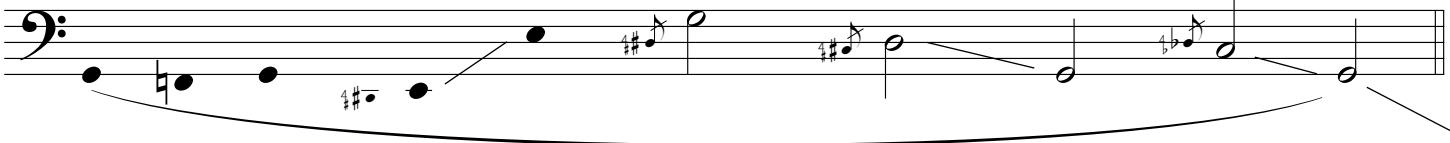
Cloud call 4



Cloud call 5

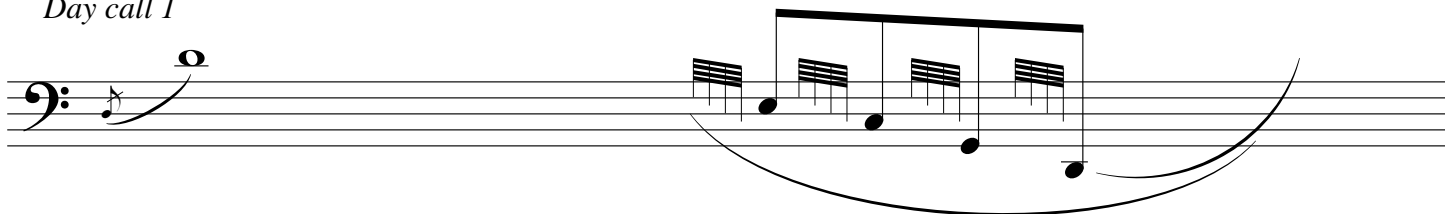


Cloud call 6

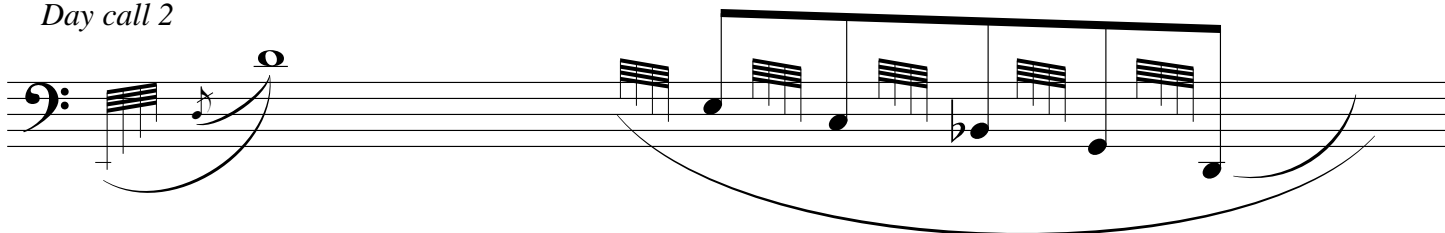




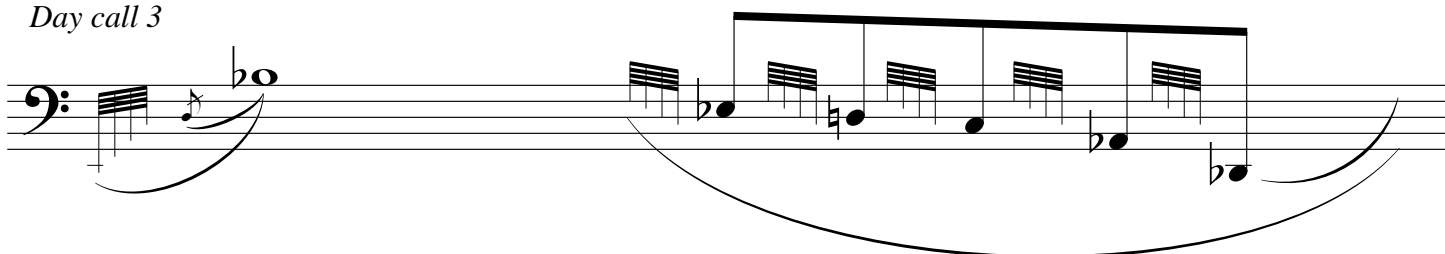
*Day call 1*



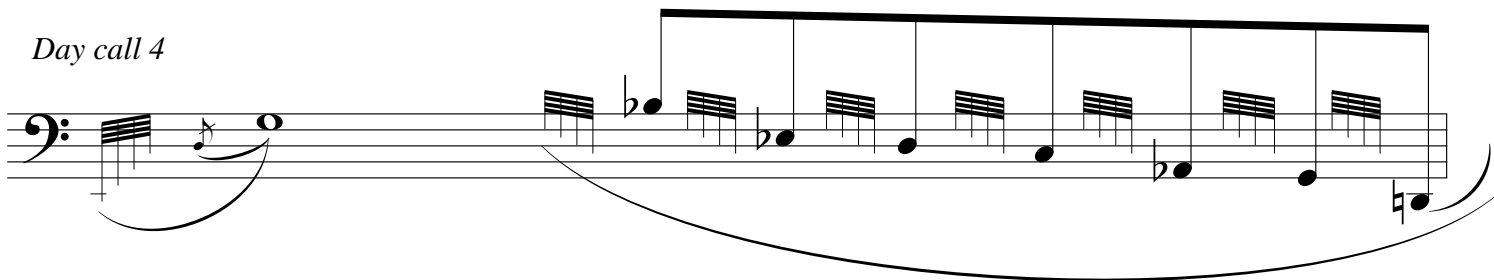
*Day call 2*



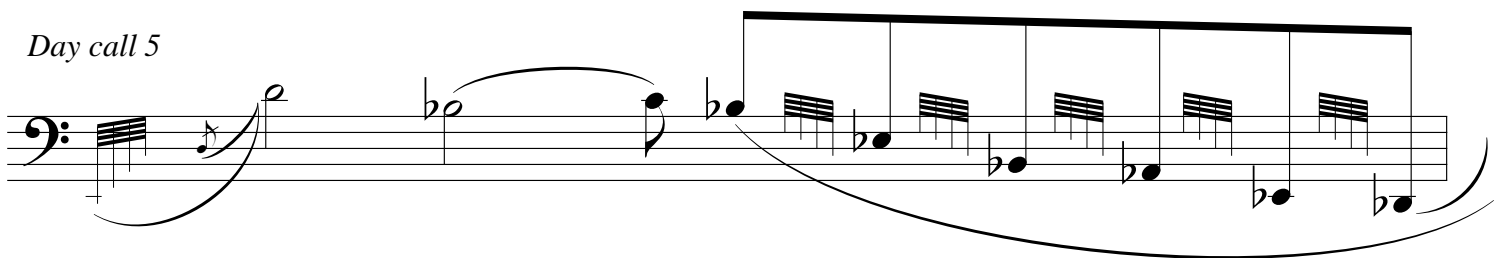
*Day call 3*



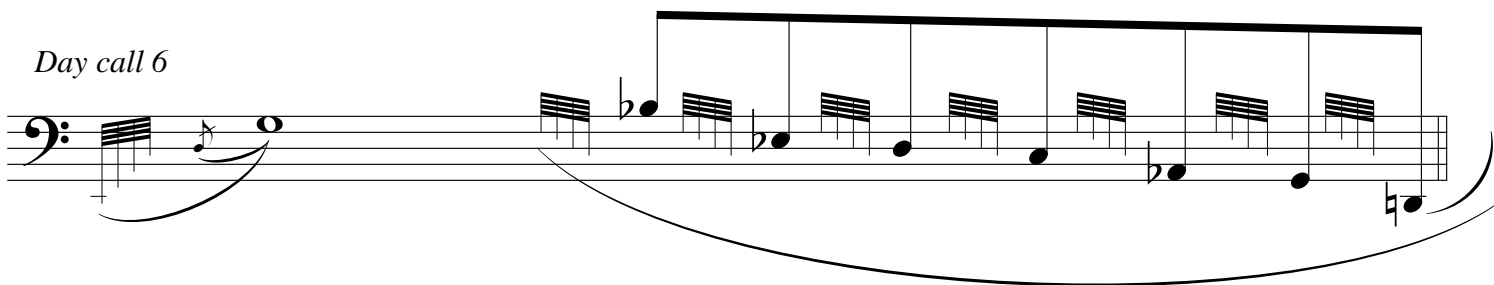
*Day call 4*



*Day call 5*



*Day call 6*



*Cry Call 1*

Musical notation for Cry Call 1, featuring a bass clef and a single staff. The melody begins with a four-note chord (G4, A4, B4, C5) on a quarter note, followed by a quarter note G4. A 4/4 time signature is placed above the staff. The melody continues with a quarter note B3, a quarter note A3, and a quarter note G3. A large slur spans the first two measures, and a line connects the end of the first measure to the start of the second.

*Cry Call 2*

Musical notation for Cry Call 2, featuring a bass clef and a single staff. The melody begins with a four-note chord (G4, A4, B4, C5) on a quarter note, followed by a quarter note G4. A 4/4 time signature is placed above the staff. The melody continues with a quarter note B3, a quarter note A3, a quarter note G3, a quarter note F3, a quarter note E3, a quarter note D3, a quarter note C3, and a quarter note B2. A large slur spans the first two measures, and another large slur spans the last four measures. Lines connect the end of the first measure to the start of the second, and the end of the fourth measure to the start of the fifth.

*Cry Call 3*

Musical notation for Cry Call 3, featuring a bass clef and a single staff. The melody begins with a four-note chord (G4, A4, B4, C5) on a quarter note, followed by a quarter note G4. A 4/4 time signature is placed above the staff. The melody continues with a quarter note B3, a quarter note A3, a quarter note G3, a quarter note F3, a quarter note E3, a quarter note D3, a quarter note C3, a quarter note B2, a quarter note A2, a quarter note G2, a quarter note F2, a quarter note E2, a quarter note D2, a quarter note C2, a quarter note B1, and a quarter note A1. A large slur spans the first two measures, and another large slur spans the last four measures. Lines connect the end of the first measure to the start of the second, and the end of the fourth measure to the start of the fifth.

*Cry Call 4*

Musical notation for Cry Call 4, featuring a bass clef and a single staff. The melody begins with a four-note chord (G4, A4, B4, C5) on a quarter note, followed by a quarter note G4. A 4/4 time signature is placed above the staff. The melody continues with a quarter note B3, a quarter note A3, a quarter note G3, a quarter note F3, a quarter note E3, a quarter note D3, a quarter note C3, a quarter note B2, a quarter note A2, a quarter note G2, a quarter note F2, a quarter note E2, a quarter note D2, a quarter note C2, a quarter note B1, and a quarter note A1. A large slur spans the first two measures, and another large slur spans the last four measures. Lines connect the end of the first measure to the start of the second, and the end of the fourth measure to the start of the fifth.

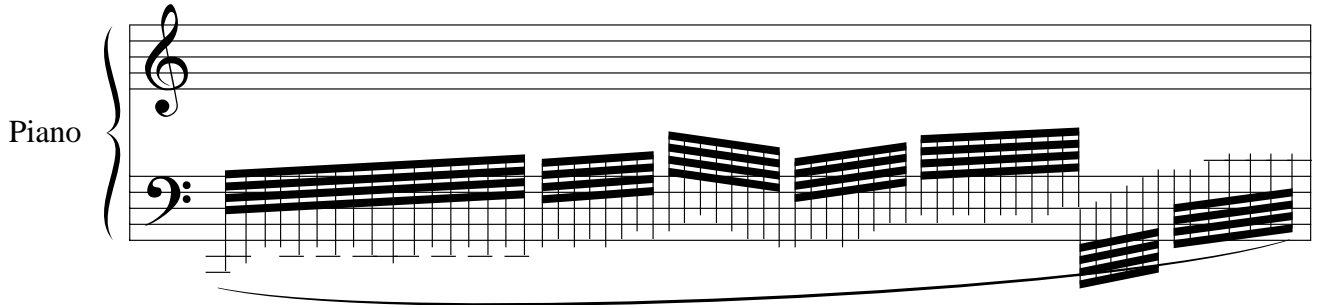
*Cry Call 5*

Musical notation for Cry Call 5, featuring a bass clef and a single staff. The melody begins with a four-note chord (G4, A4, B4, C5) on a quarter note, followed by a quarter note G4. A 4/4 time signature is placed above the staff. The melody continues with a quarter note B3, a quarter note A3, a quarter note G3, a quarter note F3, a quarter note E3, a quarter note D3, a quarter note C3, a quarter note B2, a quarter note A2, a quarter note G2, a quarter note F2, a quarter note E2, a quarter note D2, a quarter note C2, a quarter note B1, and a quarter note A1. A large slur spans the first two measures, and another large slur spans the last four measures. Lines connect the end of the first measure to the start of the second, and the end of the fourth measure to the start of the fifth.

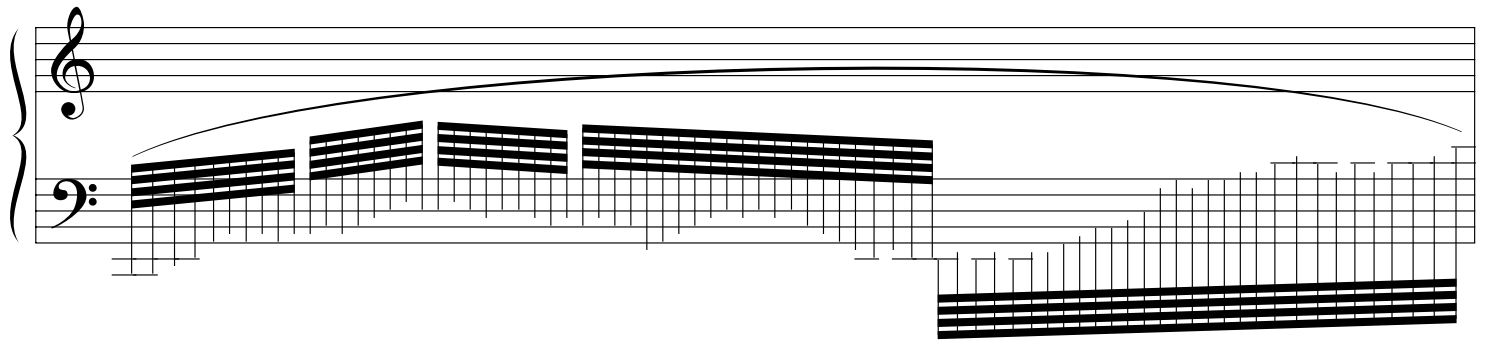
Lou Bird  
Dennis Hillyard Arr.

Cloud 1

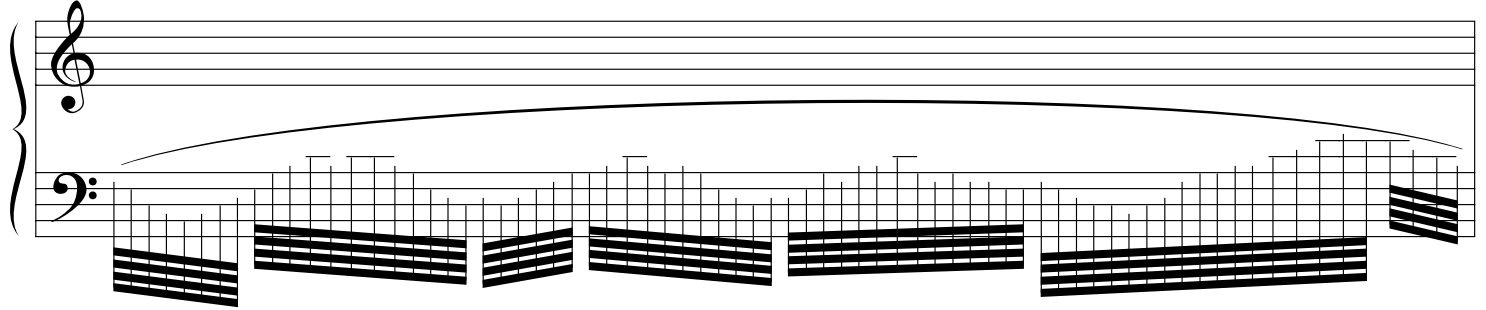
Piano



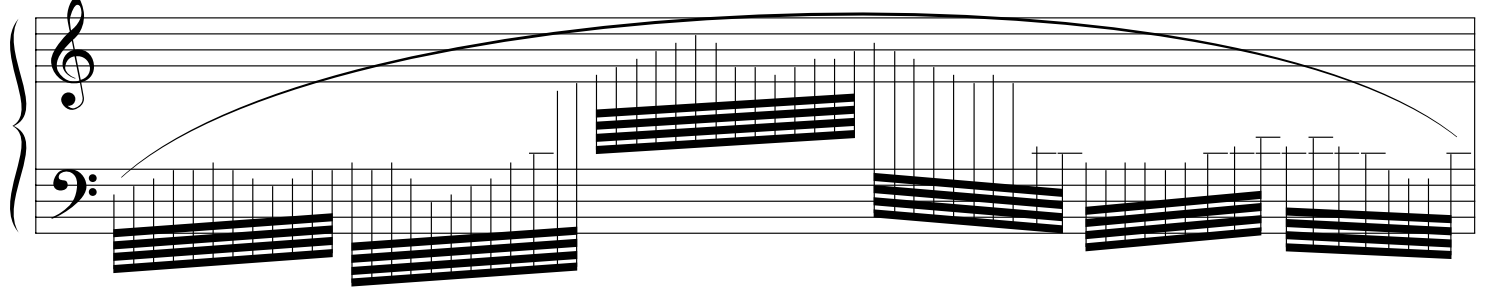
Cloud 2



Cloud 3



Cloud 4



Cloud 5

Musical score for Cloud 5, featuring a grand staff with treble and bass clefs. The piece is characterized by a long, sweeping slur that encompasses the entire duration. The right hand (treble clef) contains a series of ascending chords, while the left hand (bass clef) contains a series of descending chords. The chords are represented by thick black bars with stems and flags indicating the notes.

Cloud 6

Musical score for Cloud 6, featuring a grand staff with treble and bass clefs. The piece is characterized by a long, sweeping slur that encompasses the entire duration. The right hand (treble clef) contains a series of ascending chords, while the left hand (bass clef) contains a series of descending chords. The chords are represented by thick black bars with stems and flags indicating the notes.

Cloud 7

Musical score for Cloud 7, featuring a grand staff with treble and bass clefs. The piece is characterized by a long, sweeping slur that encompasses the entire duration. The right hand (treble clef) contains a series of ascending chords, while the left hand (bass clef) contains a series of descending chords. The chords are represented by thick black bars with stems and flags indicating the notes.

Cloud 8  
*S<sub>va</sub>*

Musical score for Cloud 8, featuring a grand staff with treble and bass clefs. The piece is characterized by a long, sweeping slur that encompasses the entire duration. The right hand (treble clef) contains a series of ascending chords, while the left hand (bass clef) contains a series of descending chords. The chords are represented by thick black bars with stems and flags indicating the notes.

Cloud 9  
*S<sub>ma</sub>*

Musical score for Cloud 9, featuring a grand staff with treble and bass clefs. The piece is characterized by a long, sweeping slur that encompasses the entire duration. The right hand (treble clef) contains a series of ascending chords, while the left hand (bass clef) contains a series of descending chords. The chords are represented by thick black bars with stems and flags indicating the notes. The score concludes with a final treble clef symbol on the right-hand staff.

Day 1

Day 1 musical notation. The first staff (treble clef) contains a sequence of notes: G4, A4, Bb4, C5, Bb4, A4, G4, F4, E4, D4. The second staff (bass clef) contains a sequence of notes: G3, A3, Bb3, C4, Bb3, A3, G3, F3, E3, D3. Both staves are bracketed together with a large slur.

Day 2

Day 2 musical notation. The first staff (treble clef) contains a sequence of notes: G4, A4, Bb4, C5, Bb4, A4, G4, F4, E4, D4. The second staff (bass clef) contains a sequence of notes: G3, A3, Bb3, C4, Bb3, A3, G3, F3, E3, D3. Both staves are bracketed together with a large slur.

Day 3

Day 3 musical notation. The first staff (treble clef) contains a sequence of notes: G4, A4, Bb4, C5, Bb4, A4, G4, F4, E4, D4. The second staff (bass clef) contains a sequence of notes: G3, A3, Bb3, C4, Bb3, A3, G3, F3, E3, D3. Both staves are bracketed together with a large slur.

Day 4

Day 4 musical notation. The first staff (treble clef) contains a sequence of notes: G4, A4, Bb4, C5, Bb4, A4, G4, F4, E4, D4. The second staff (bass clef) contains a sequence of notes: G3, A3, Bb3, C4, Bb3, A3, G3, F3, E3, D3. Both staves are bracketed together with a large slur.

Day 5

Day 5 musical notation. The first staff (treble clef) contains a sequence of notes: G4, A4, Bb4, C5, Bb4, A4, G4, F4, E4, D4. The second staff (bass clef) contains a sequence of notes: G3, A3, Bb3, C4, Bb3, A3, G3, F3, E3, D3. Both staves are bracketed together with a large slur.

Cry 1

Musical notation for Cry 1, featuring two staves with treble and bass clefs. The notation includes a melodic line in the upper staff and a supporting bass line in the lower staff, both connected by a large slur. The piece begins with a series of chords in the left hand.

Cry 2

Musical notation for Cry 2, featuring two staves with treble and bass clefs. The notation includes a melodic line in the upper staff and a supporting bass line in the lower staff, both connected by a large slur. The piece begins with a series of chords in the left hand.

Cry 3

Musical notation for Cry 3, featuring two staves with treble and bass clefs. The notation includes a melodic line in the upper staff and a supporting bass line in the lower staff, both connected by a large slur. The piece begins with a series of chords in the left hand.

Cry 4

Musical notation for Cry 4, featuring two staves with bass clefs. The notation includes a melodic line in the upper staff and a supporting bass line in the lower staff, both connected by a large slur. The piece begins with a series of chords in the left hand.

Cry 5

Musical notation for Cry 5, featuring two staves with bass clefs. The notation includes a melodic line in the upper staff and a supporting bass line in the lower staff, both connected by a large slur. The piece begins with a series of chords in the left hand.